

What is the Disability Royal about?

The Disability Royal Commission will run for 3 years until 2022.

It will look at ways to prevent people with disability from experiencing:

- **Violence** -if someone is hurting you,
- **Abuse** - if someone is treating you badly,
- **Neglect** - if someone is not helping you the way they are supposed to help you, and
- **Exploitation**- if someone is taking advantage of you

Telling your story can help the Disability Royal Commission to work out:

- What went wrong
- What needs to be fixed.

It will also look at ways to stop people with disability experiencing violence, abuse, neglect and exploitation.

How to contact us

Our Advocate can be contacted on:



(03) 8407 3684



0401 787 047



DRC@citizenadvocacy.com.au

North East Citizen Advocacy Inc.

56 Gabonia Ave
PO Box 251
Watsonia 3087

NECA is funded by the Department of Social Services and has a voluntary Committee of Management.



for

The Disability
Royal Commission



North East Citizen Advocacy

www.citizenadvocacy.com.au

Advocacy Support

We are funded to provide free support to people wishing to engage with the Disability Royal Commission

If you think that you might want to tell your story to the Royal Commission, or it has raised issues for you;

We can help you to:



Tell your story



Work out how best to tell your story



Protect your rights



Answer any questions you may have about the Royal Commission

Other Supports

We can also:



Find supports to help you with communication



Find someone to support you with legal issues



Find someone to support you with financial issues



Find you ongoing counselling and/or psychological support

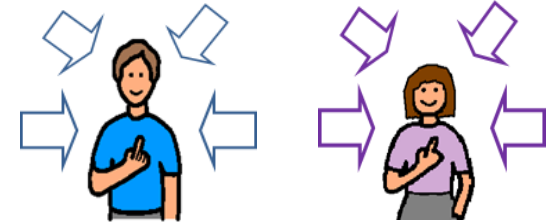
What we won't do:



We won't tell you what to do

We won't make decisions for you

Who can access help from our Advocate?



If you are;

- A person with a disability
- A family member or carer of a person a disability

And you reside in:

- Banyule,
- Nillumbik,
- Whittlesea, or
- Darebin

North East Citizen Advocacy is a free service.